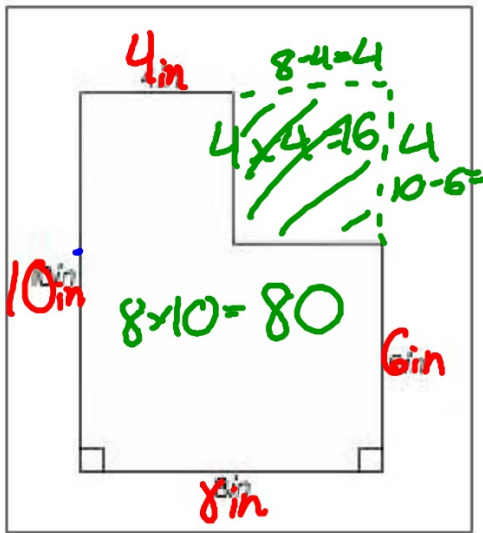


Module 12

Lesson 3

I will be able to find the area of composite figures!

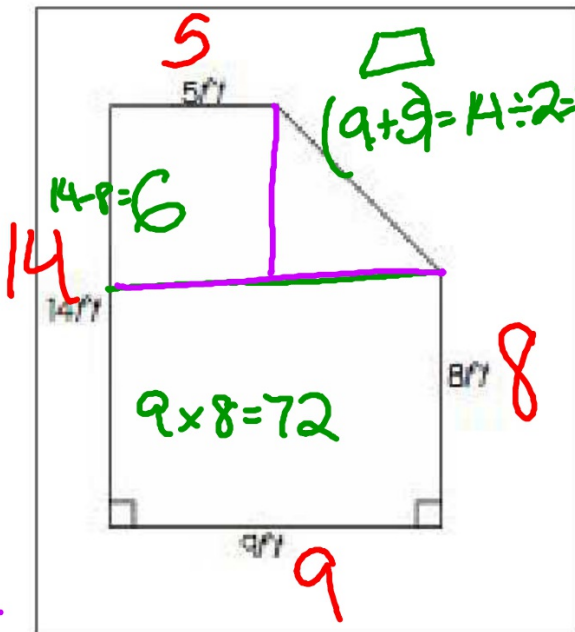


A = $16 + 48 = 64 \text{ in}^2$

$80 - 16 = 64 \text{ in}^2$

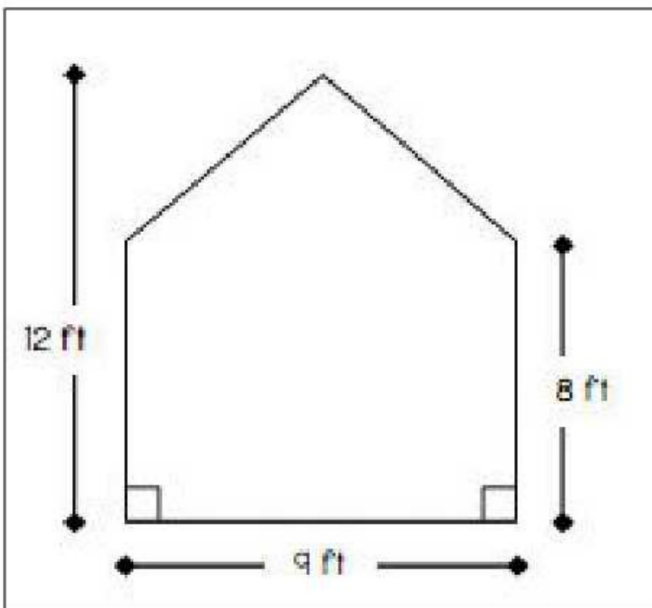
∴

Lauren wants to put down carpet in her bedroom. How many square feet will she need to buy?



A =

$$42 + 72 = 114 \text{ ft}^2$$



Merlin wants to plant new grass seed in her yard. How many square ft will he have to plant?

$$\square 9 \times 8 = 72$$

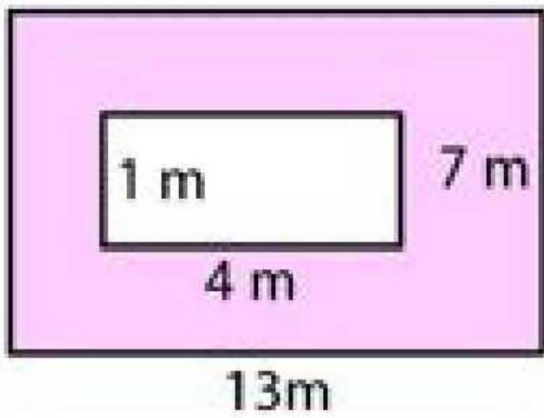
$$\triangle 4 \times 9 = 36 \div 2 = 18$$

$$72 + 18 = 90 \text{ ft}^2$$

$$\square 9 \times 12 = 108$$

$$\triangle 4.5 \times 4 = 18 \div 2 = 9 \times 2 = 18$$

$$108 - 18 = 90 \text{ ft}^2$$



Find the area of only the pink area.