

Module 2 Lesson 8

**I will be able to find the area and perimeter of
Rectangles on a coordinate plane**

**I will be able to find reflections on
a Coordinate Plane**

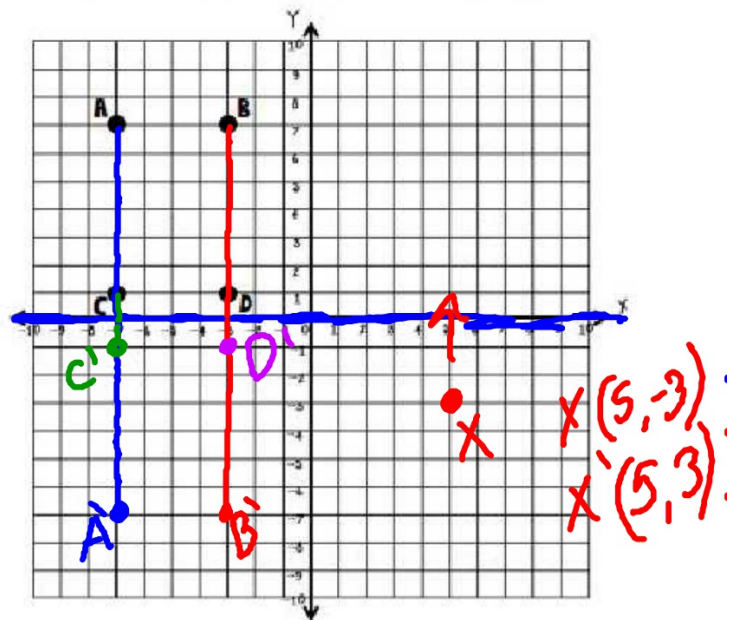
Reflection over the
x-axis

y becomes opposite

ORIGINAL	
A	$(-7, 7)$
B	$(-3, 7)$
C	$(-7, 1)$
D	$(3, 1)$

New IMAGE	
A'	$(-7, -7)$
B'	$(-3, -7)$
C'	$(-7, -1)$
D'	$(-3, -1)$

$A' = A$ prime



Reflection over the y-axis

X - opposites

	ORIGINAL	NEW IMAGE
A	(2, 3)	A' (-2, 3)
B	(8, 3)	B' (-8, 3)
C	(2, -2)	C' (-2, -2)
D	(8, -2)	D' (-8, -2)

